

Introduction to vuForge

The Java Viewers are designed to display specific types of Web page content, including Zoom 2D Flashpix images, image objects and panoramic images. Having separate Java viewers for each type of content makes the downloads small and fast. For the most current updates to the Java Viewers and to see content examples, visit the iseemedia website at www.iseemedia.com.

- The Zoom 2D Viewer displays 2D Flashpix images.
- The Zoom Object Viewer displays Flashpix image objects.
- The Zoom Panorama Viewer displays Flashpix panoramic images.
- The Zoom Virtual Viewer displays Flashpix virtual tour images.
- The Object Viewer displays JPEG image objects.
- The Panorama Viewer displays JPEG panoramic images.
- The Virtual Tour Viewer displays JPEG virtual tours.

This application has been designed to assist you in customizing the Java Viewer toolbar to fit in with your web page.

The following links will take you directly to the location is this document to help you use and customize vuForge.

[Using the vuForge interface](#)

[Selecting the viewer to display your images](#)

[Changing the splash screen](#)

[Applying new skins to your toolbar](#)

[Changing the color scheme of your toolbar](#)

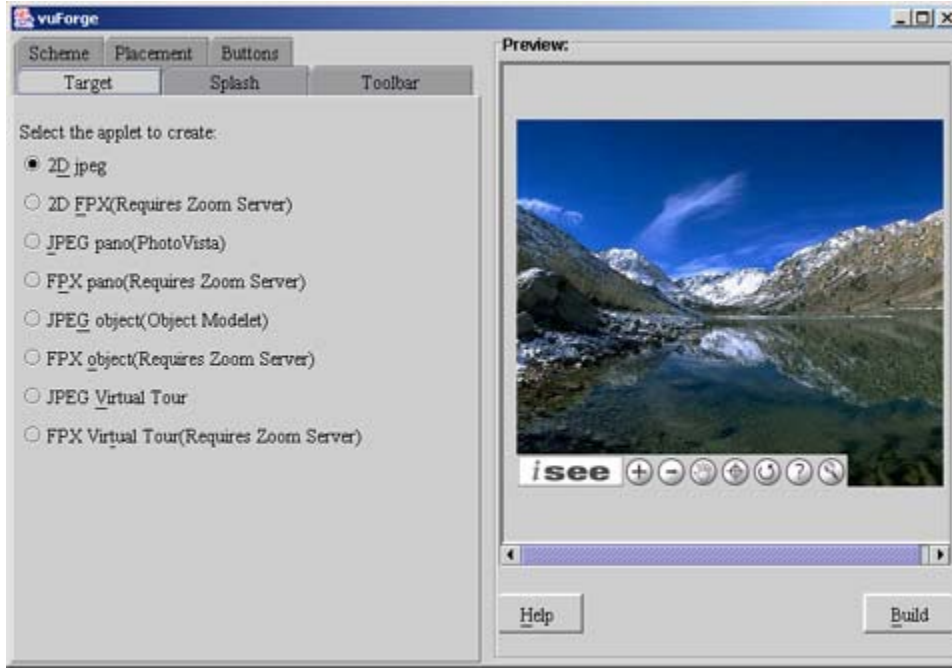
[Placement of your toolbar](#)

[Customizing the buttons on your toolbar](#)

[Using the Build button](#)

Using the vuForge Interface

The interface has been designed so you can easily customize the viewer toolbar by simply clicking the tabs.



Selecting the viewer to display your images using the Target tab

The **Target** tab allows you to select the type of viewer you would like to use to display your images.

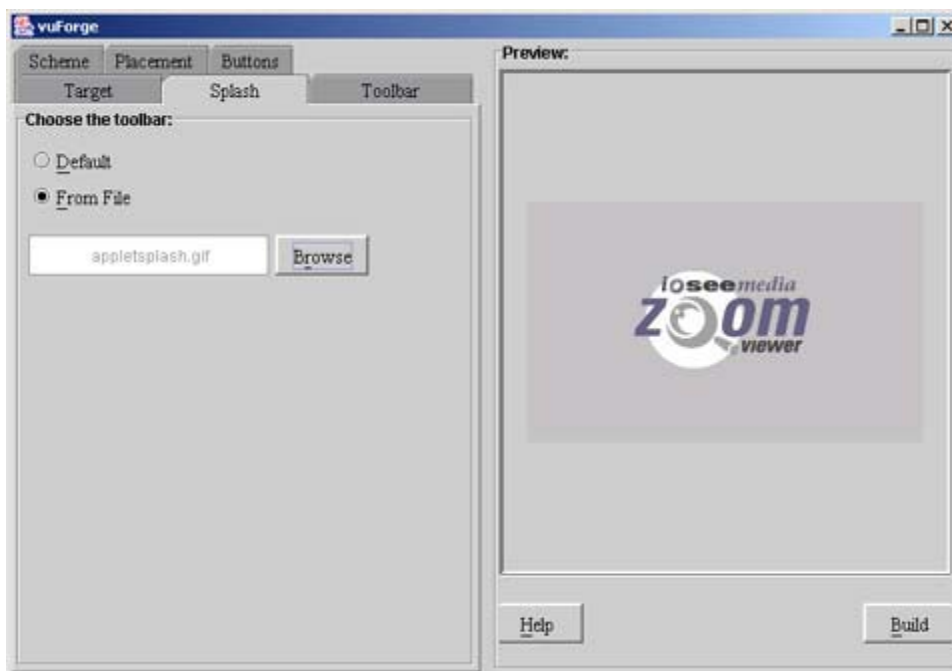
- 2D Flashpix viewer - This viewer displays JPEG and Flashpix (FPX) images, and requires the Zoom Image Server to work.
- JPEG Pano viewer - This viewer displays JPEG panoramas created using Photovista. This viewer requires Photovista.
- Flashpix Pano viewer - This viewer displays JPEG and Flashpix images created using Photovista. It requires the Zoom Image Server to deliver the Flashpix images.
- JPEG Object viewer - This viewer displays JPEG objects created using Photovista 3D Objects.
- Flashpix Object viewer - This viewer displays Flashpix and JPEG objects created using Photovista 3D Objects and requires the Zoom Image Server to deliver them.

- JPEG Virtual Tour viewer - This viewer displays JPEG virtual tours created using Photovista Virtual Tour.
- FPX Virtual Tour viewer - This viewer displays Flashpix and JPEG virtual tours created using Photovista Virtual Tour and requires the Zoom Image Server to deliver them.

All viewers allow you to pan, scroll, zoom, refresh, get info, etc. The JPEG viewers do not require that you host your images on a Zoom Image Server. The Flashpix viewers require a Zoom Image Server. As you select each viewer, the preview window will display a sample of how the image will be displayed in the viewer.

Changing the splash screen using the Splash tab

Changing the splash screen of the viewer is done by selecting the **Splash** tab. Once a splash screen has been selected, the preview window will display the splash screen as it will be seen in the viewer.



Applying new skins to your toolbar using the Toolbar tab

The **Toolbar** tab allows you to select the skin you want to use for the viewer toolbar. You can choose from the Default skin, choose from one of the skins provided, or visit www.iseemedia.com to download new skins. As you click on each skin, a preview of what the toolbar will look like will appear in the **Preview** window



Changing the color scheme of your toolbar using the Scheme tab

Once you have selected the skin of the toolbar you wish to use, you can select the color scheme. The color scheme on the **Scheme** tab will change according to the skin that you choose. Once a color scheme has been selected, the **Preview** window will display the toolbar as it will be seen in the viewer.



Placement of your toolbar using the Placement tab

Use the **Placement** tab to select where in the viewer window you would like to place the toolbar. As you select the placement of the toolbar, the **Preview** window will display a sample of how the viewer will be displayed.



Customizing the buttons on your toolbar using the Button tab

You can choose which toolbar buttons you would like to show on your toolbar. Select the toolbar buttons by clicking the box just above the toolbar button. The toolbar buttons that you cannot turn off are located under **Fixed** Buttons.

Note: Depending on the **Target** viewer you choose, the toolbar buttons will change according to the viewer type.



Toolbar Button descriptions

	Zooms into the image. Select Zoom In and click the area to be zoomed into.
	Zoom out of the image. Select Zoom Out and click anywhere in the Viewer window.
	Displays hotspot links.
	Returns the image to the initial view after you have zoomed in or panned the image.
	Links to the iseemedia website. Can be customized to link to any web page.
	Rotates the panorama to view a different segment of the panorama. Drag the panorama to rotate in the desired direction.
	Rotates the panorama to the left. The panorama will rotate at any zoom level.
	Rotates the panorama to the right. The panorama will rotate at any zoom level.
	Pauses the panorama from rotating. The rotation can be paused at any zoom level.
	Lets you click the image and drag to view a new segment of the image. Pan mode can used in the applet or in the magnifier.
	Shows the area within the box at the next zoom level of the image. Click and drag the mouse to magnify the desired section.

Using the Build button

Once you have finished customizing your toolbar, click the **Build** button. You will be asked whether you want to customize the applet size. Customizing or hard coding the applet size is useful if you want to limit the image extent in the browser window or to lower the server load. It will also allow you to control how much access and connectivity your users will have and minimize the risk of images being stolen.

Click **Yes** to specify the width and height of the applet or **No** to use the default applet size. Once you have specified the applet size, click **Confirm**.

Now you have to place some files created by vuForge in various directories.

The files "result.htm", the applet's JAR file and the IVR files are located in vuForge's output folder. If you are building an applet associated with the Zoom Image Server, an associated FPX file is also located in the output folder. The output folder can be found at c:\installdirectory\iseemedia\vuForge 1.1\output.

To launch the 2D JPEG, JPEG Pano or JPEG Object applet, locate the file "result.htm" and double-click it. One way to launch any of the applets associated with the Zoom Image Server is to locate the applet's JAR file and copy it to the "servercomponents/code" folder, locate the applet's IVR file and copy it to the "servercomponents/ivr" folder and locate the associated FPX file and copy it to the Zoom Image Server "image" folder. Double-click "result.htm" to run the applet.

An explanation of the JAR files:

- objectapplet.jar - This is the JPEG Object viewer
- panoapplet.jar - This is the JPEG Pano viewer
- zoom2dapplet.jar - This is the 2D FPX viewer
- zoomobjectapplet.jar - This is the FPX Object viewer
- zoompanoapplet.jar - This is the FPX Pano viewer

Virtual Tour Viewers

The Virtual Tour viewers are designed to work with Virtual Tour Maker. In order to view the result of creating a Virtual Tour viewer, you must have Virtual Tour Maker 2.0 installed. Once you click on the **Publish** or **Preview** command in Virtual Tour Maker, the new viewer you created will replace the standard Virtual Tour viewer. An archive folder is located in the applet folder and will contain a copy of the original applets accompanying Virtual Tour Maker. If for some reason you would like to revert to the original applets, copy the applets from the archive folder to the default folder. Do not erase these original applet files.